

# industrial pumps

product overview 2012 rev 2

the perfect choice for your pumping needs



topflo®

The Tapflo logo is displayed in a blue, lowercase, sans-serif font. Above the logo, there is a grey rectangular bar on the left and a pink square on the right. The background of the entire page features a light blue world map.

# tapflo®

our ambition is to **make**

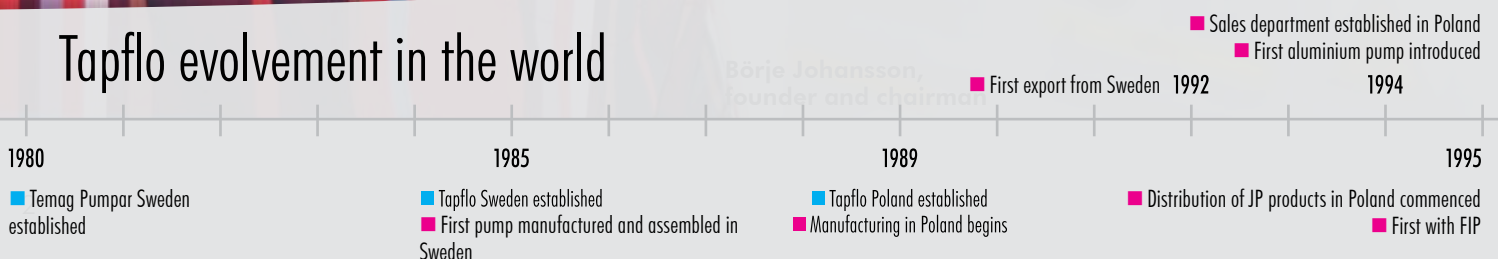
*Tapflo is a leading pump manufacturer with the ambition to provide a wide range of premium products for various industrial applications.*

*We are represented by Tapflo companies and distributors in more than 50 countries, with the main production located in Europe and Asia. The headquarters is situated in Sweden.*



Börje Johansson,  
founder and chairman

## Tapflo evolvement in the world



# pumping easy

what ever  
where ever  
when ever

## ■ Long term engagement is our core

Our aim - to continue to provide first rate products according to your needs and the latest technology is mutually beneficial. That is why we see each customer relationship as a long term commitment.

## ■ Local means on your terms

You can summarize Tapflo's marketing philosophy with the words: We think global but act locally.

## ■ Flexibility - the foundation of a good service

We are prepared to deal with reality, knowing that in practice this means answering questions, offering solutions and supply spare parts with a minimal loss of time.

## ■ Customizing - to bring the product to the needs

Our intention is always to help our clients find the most cost effective solutions to increase their company's efficiency. If this means changing the design of the pump we see it as a challenge - not a problem.

## ■ To produce is to develop

When you are actively involved in the manufacture of a product, it is almost impossible not to discover ways to improve it. This allows us to frequently offer pumps that are even more sustainable and efficient.

Many of our products comply with EC ATEX directives for equipment in explosion hazardous environments. The aseptic series is EHEDG certified (European Hygienic Engineering & Design Group), the pharmaceutical series has USP VI approval. All our products are of course CE marked and followed by our comprehensive instruction manuals.

Tapflo manufacturing process is certified according to ISO9001:2001.



■ Tapflo Baltic established  
■ Tapflo Serbia established  
■ Production area in Poland doubled  
2010

2009 ■ Tapflo Czech/Slovakia  
Tapflo Kazakhstan established

2007 ■ Tapflo Turkey and Tapflo Ireland established  
■ 3" PE & PTFE pump introduced

2005 ■ Tapflo Romania  
Tapflo France  
Tapflo India  
Tapflo China established  
■ Company of the year in Sweden  
■ EHEDG pump introduced

2002 ■ Tapflo Iberica established  
■ Pumps for powder introduced  
■ ATEX pumps introduced

2000 ■ Tapflo Russia established  
■ ISO9001 in the factory

1998 ■ Tapflo UK established  
■ SS casted pump introduced

2008 ■ Biggest European diaphragm pump producer  
■ Production plant in China started

2006 ■ Tapflo Bulgaria established

2004 ■ Tapflo Ukraine established  
■ CT pumps introduced  
■ New plant in Poland

2001 ■ Tapflo South Africa established  
■ Sales to East Asia commenced

1999

1998

2000

2002

2005

2007

2009

2010

2001

2004

2006

2008

1999

1998

2000

2002

2005

2007

2009

2010

2001

2004

2006

2008

1999

1998

2000

2002

2005

2007

2009

2010

2001

2004

2006

2008

1999

1998

2000

2002

2005

2007

2009

2010

2001

2004

2006

2008

1999

1998

2000

2002

2005

2007

2009

2010

2001

2004

2006

2008

1999

1998

2000

2002

2005

2007

2009

2010

2001

2004

2006

2008

1999

1998

2000

2002

2005

2007

2009

2010

2001

2004

2006

2008

1999

1998

2000

2002

2005

2007

2009

2010

2001

2004

2006

2008

1999

1998

2000

2002

2005

2007

2009

2010

2001

2004

2006

2008

1999

1998

2000

2002

2005

2007

2009

2010

2001

2004

2006

2008

1999

1998

2000

2002

2005

2007

2009

2010

2001

2004

2006

2008

1999

1998

2000

2002

2005

2007

2009

2010

2001

2004

2006

2008

1999

1998

2000

2002

2005

2007

2009

2010

2001

2004

2006

2008

1999

1998

2000

2002

2005

2007

2009

2010

2001

2004

2006

2008

1999

1998

2000

2002

2005

2007

2009

2010

2001

2004

2006

2008

1999

1998

2000

2002

2005

2007

2009

2010

2001

2004

2006

2008

1999

1998

2000

2002

2005

2007

2009

2010

2001

2004

2006

2008

1999

1998

2000

2002

2005

2007

2009

2010

2001

2004

2006

2008

1999

1998

2000

2002

2005

2007

2009

2010

2001

2004

2006

2008

1999

1998

2000

2002

2005

2007

2009

2010

2001

2004

2006

2008

1999

1998

2000

2002

2005

2007

2009

2010

2001

2004

2006

2008

1999

1998

2000

2002

2005

2007

2009

2010

2001

2004



# Diaphragm pumps

Tapflo diaphragm pumps (membrane pumps) are some of the most versatile pumps on the market today. They can be used in a variety of installations in numerous applications. Thanks to the simple operating principle, with a compact and reliable design, Tapflo diaphragm pumps meet the demands of heavy industrial duties.



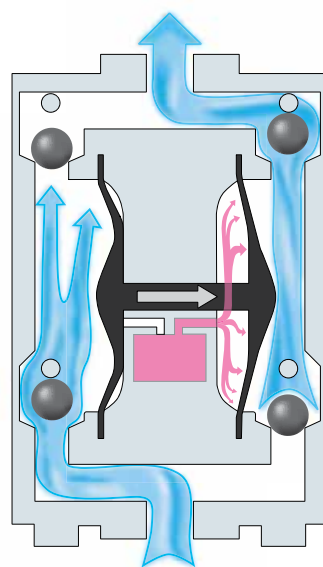
The PTFE film of the diaphragm forms a closed surface to the liquid. The integrated light metal supporting core and the fabric reinforcement fulfill high strength requirements.



Short air distribution ways and low friction sealing solutions grant for reliable duty and an energy saving and pollution free drive.

## Working principle

The Tapflo diaphragm pump is driven by compressed air. The two diaphragms are doing the work to prime and push the liquid through the pump system.



## Ingenious design

Two major components are essential for the function of the pump.

**Long life diaphragms:** Tapflo diaphragms are of sandwich compound construction, superior for continuous heavy duty service, with a completely smooth surface in contact with the liquid. This results in no leak through and a diaphragm which is easy to keep clean. The diaphragm is available in various materials and colours to suit any requirements, it is made from PTFE, EPDM, NBR or FKM.

**Pollution free air valve:** The valve is made for maintenance free duty with no lube air, thanks to the ingenious sealing system. It will not only save your money for lubrication, it will also save your environment from pollution.

carefully designed for

# heavy duty and long lasting performance



## ■ PE & PTFE pumps (1)

Pumps made of polyethylene (PE) or virgin PTFE plastics are suitable for handling almost any kind of liquid whether it is viscous, chemically aggressive or with solids.

## ■ Metal pumps (2)

Available in aluminum, cast iron, stainless steel, Hastelloy and PTFE-coated aluminum. All metal pumps are available in explosion proof ATEX-marked version.

## ■ Sanitary pumps (3)

Pumps particularly designed to meet the requirements of the food, beverage, pharmaceutical and cosmetic industries. Lubrication free air distribution system and total visual inspection of the wetted parts are some of the major features for this pump series.

## ■ EHEDG aseptic pumps (4)

Our new aseptic series for sterile applications in primarily the pharmaceuticals, bio technology and foodstuffs industries.

This is the first Tapflo series to be approved according to EHEDG regulations.

## ■ Pharmaceutical pumps (5)

This series is produced to serve the biotech- and pharmaceutical industries in numerous applications.

## ■ Powder pumps (6)

Pumps modified from the PTFE coated aluminium series. This technology enables an efficient and economic transfer of light weight process powders.

### Fast facts

|                |   |
|----------------|---|
| Capacity       | 0 - 820 l/min   |
| Pressure       | 0 - 14 bar (max 8 with standard)  |
| Sizes          | 1/4" up to 3" (DN8 - DN80)  |
| Pump materials | PE, PTFE, aluminum, cast iron<br>stainless steel AISI 316L, Hastelloy<br>and PTFE coated aluminum |

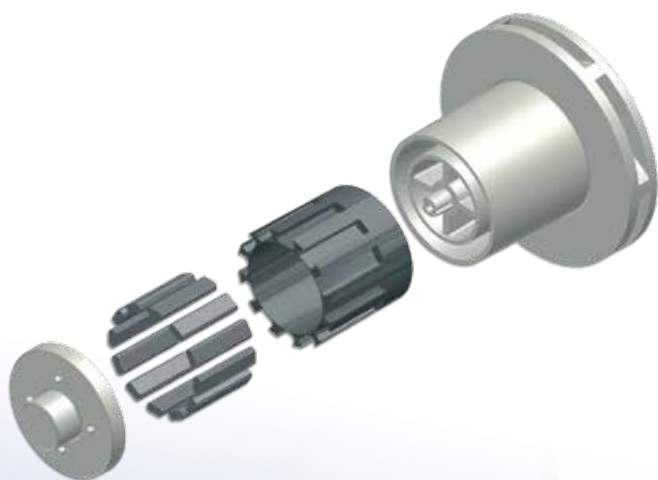
# Centrifugal pumps

*Tapflo offers a wide range of mechanical sealed centrifugal pumps in stainless steel and seal less pumps in plastics PP and PVDF. Our versatile centrifugal pumps can be used in numerous applications. Thanks to the simple operating principle, with a compact and reliable design the pump range has a very wide range of applications – from transfer of water, to pumping of chemicals.*



## **Working principle**

The centrifugal pump uses a rotating impeller to create flow. The fluid enters the pump impeller along the rotating axis and is accelerated by the impeller, flowing radially outward through the pump casing, from where it exits into the discharge piping.



## **Powerful magnet couplings**

The magnets of the CTM range in NdFeB (Neodymium-iron-boron) with a unique magnet cage system have a superior strength also under demanding circumstances. The power from the drive is transmitted even at high temperatures and with high specific gravity liquids.



## **Big choice of sealing solutions**

The CTI & CTH pump range features top brand mechanical seals in a variety of materials to suit most type of liquids. They are available in combinations of ceramic, graphite and SiC. For special duties, flushed and lubricated seals are available.



conventional pumps with

# ingenious design for easy maintenance



## ■ CTI & CTH centrifugal pumps (1)

These pumps are open or semi open single stage centrifugal pumps, manufactured in high finish stainless steel AISI 316L. The range of applications is wide, from transfer of water to pumping of mild chemicals and low/medium viscous food products. To satisfy special needs, several options are available like flushed and/or lubricated seal, long coupled, draining device, heating jacket and hygienic shroud.

**The industrial series CTI** is designed with glass blasted pump casing. A variety of mechanical seal options and other executions are available to satisfy most type of industrial duties.

**The hygienic series CTH** is supplied with electro polished pump casing and internals. This series is specially dedicated for hygienic duties in food, beverage and pharmaceutical industries, where clean- and drain-ability are important keys.

## ■ CTM magdrive centrifugal pumps (2)

CTM is a compact and seal less pump, where the power from the motor is transmitted to the centrifugal impeller by means of a magnetic coupling. The wetted components are non-metallic injection moulded thermoplastics PP-GF or PVDF. The pumps handle many types of low and normal viscous clean liquids such as chemical aggressive and toxic ones.

## ■ CTV vertical centrifugal pumps (3)

CTV is a seal less and dry running safe pump specialized for transfer and circulation of various liquids from containers, sumps and tanks. It is manufactured from PP (polypropylene), PVDF or stainless steel AISI 316L.

### Fast facts

|                |   |
|----------------|---|
| Capacity       | 1 - 60 m <sup>3</sup> /h, 0.12 - 7.5 kW |
| Head           | 2 - 47 m                                |
| Sizes          | 3/4" - 2 1/2" (DN20 - DN65)             |
| Pump materials | PP, PVDF and stainless steel AISI 316L  |

# Please contact us at your nearest Tapflo office

Tapflo has approximately 50 sales offices spread over more than 20 countries. In addition to this we are represented by independent distributors in about another 30 countries.

■ Australia ■ Belarus ■ Belgium ■ Bosnia ■ Brazil ■ Bulgaria ■ Chile ■ China ■ Colombia ■ Croatia ■ Czech/Slovakia ■ Denmark ■ Ecuador ■ Estonia ■ Finland ■ France ■ Greece ■ Germany ■ Hong-Kong ■ Hungary ■ India ■ Indonesia ■ Iran ■ Ireland ■ Israel ■ Italy ■ Kazakhstan ■ Latvia ■ Lithuania ■ Macedonia ■ Malaysia ■ Montenegro ■ The Netherlands ■ New Zealand ■ Norway ■ Poland ■ Philippines ■ Romania ■ Russia ■ Singapore ■ Slovenia ■ South Africa ■ Spain ■ Sweden ■ Switzerland ■ Syria ■ Taiwan ■ Thailand ■ Turkey ■ Ukraine ■ United Arab Emirate ■ United Kingdom ■ USA

## www.tapflo.com

### Austria

Tapflo GmbH  
Tel: +43 732 27292920  
sales@tapflo.at

### Belarus

Tapflo Belarus  
Tel: +375 17 3121370  
sales@tapflo.by

### Bulgaria

Tapflo EOOD  
Tel: +359 (2) 974 18 54  
sofia@tapflo.org

### Czech & Slovakia

Tapflo s.r.o.  
Tel: +420 548 138 660  
tapflo@tapflo.pump.cz

### China

Tapflo (Wuxi)  
Tel: +86 510 8241 7602  
sales@tapflo.cn

### Denmark

Tapflo Danmark  
Tel: +45 36 454600  
info@tapflo.dk

### France

Tapflo France  
Tel: +33 1 34 78 82 40  
info@tapflo.fr

### India

Tapflo Pumps (India)  
Tel: +91 44 26534479  
tapfloindia@gmail.com

### Ireland

Tapflo Ireland Ltd  
Tel: +353 1 2011911  
info@tapflo.ie

### Italy

Tapflo Italia  
Tel: +39 0362307698  
info@tapfloitalia.com

### Kazakhstan

Tapflo Kazakhstan  
Tel: +7 727 256 05 45  
sales@tapflo.kz

### Latvia

Tapflo Latvia  
Tel: +371 67472205  
riga@tapflo.lv

### Poland

Tapflo Sp. z o.o.  
Tel: +48 58 5301181  
gda@tapflo.pl

### Romania

S.C. Tapflo Rom. S.r.l.  
Tel: +40 21 3451255  
sales@tapflo.ro

### Russia

Tapflo Company  
Tel: +7 495 232 18 28  
sales@tapflo.com.ru

### Serbia

Tapflo d.o.o.  
Tel: +381 21 44 58 08  
sales@tapflo.rs

### Spain

Tapflo Iberica  
Tel: +34 677 47 89 25  
avives@tapfloiberica.es

### South Africa

Tapflo (Pty) Ltd  
Tel: +27 31 701 5255  
sales@tapflo.co.za

### Turkey

Tapflo Makina Ltd  
Tel: +90 216 467 33 11  
sales@tapflo.com.tr

### Ukraine

TOB Tapflo  
Tel: +380 44 222 68 44  
sales@tapflo.com.ua

### United Kingdom

Tapflo (UK) Ltd  
Tel: +44 2380 252325  
sales@tapflo.pumps.co.uk

## Tapflo AB

Filaregatan 4  
S-442 34 Kungälv, Sweden

Tel: **+46 303 63390**  
Fax: **+46 303 19916**

E-mail addresses:  
Commercial questions  
Orders  
Tech support

**sales@tapflo.com**  
**order@tapflo.com**  
**support@tapflo.com**